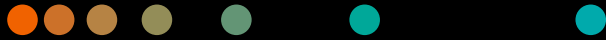
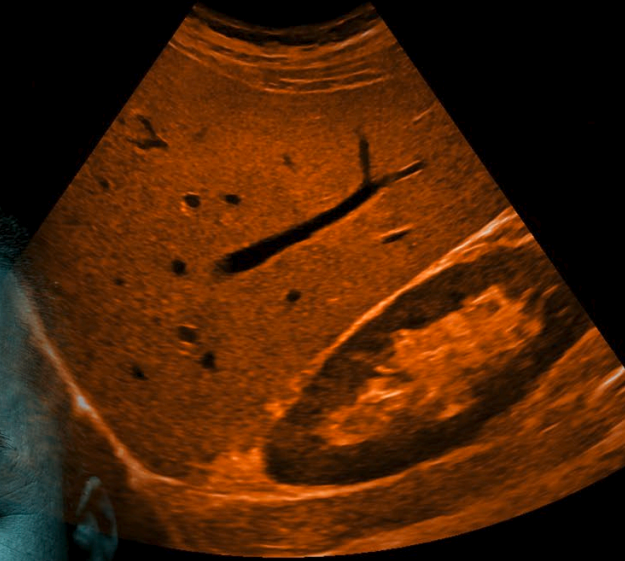


ACUSON Juniper Ultrasound System

Everything you need, nothing you don't

Release 1.5

[siemens-healthineers.com/juniper](https://www.siemens-healthineers.com/juniper)



*The clinical overlay is not that of the individual pictured.
It was modified for better visualization.*

Helping you transform care delivery

Higher patient volumes. Larger patient sizes. Limited diagnostic certainty. In the face of these trending challenges, you need a reliable ultrasound system that can consistently deliver high-quality images across disease states – a system with optimized accessibility, expanded applications, and ease of use.

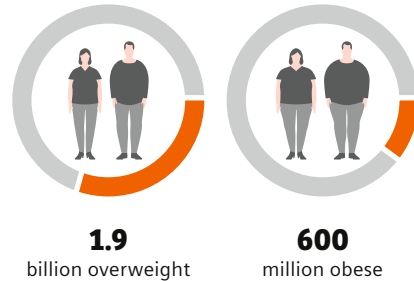
Created with these needs in mind, the ACUSON Juniper empowers you to image every patient, knowing you have the clinical information necessary for confident decision-making. Small on the outside, yet big on the inside, the system is designed to adapt to your everyday clinical and workflow challenges.

When form and function meet, the result is the ACUSON Juniper, an ultrasound system that is smaller, more powerful, and capable of accommodating virtually all patients.



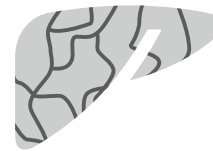
The ever growing burden of liver disease

Worldwide 1.9 billion adults are overweight¹ and 600 million are obese¹



Ultrasound professionals are faced with a patient population that is increasingly harder to scan. Imaging at greater depths is needed to provide higher levels of diagnostic confidence.

Globally, liver cirrhosis has increased by 20 percent in the last 10 years¹



20%
increase of cirrhosis

Millions of people are at risk of developing liver disease from obesity, alcohol abuse, and Hepatitis. However, patients usually show no symptoms until the very late stages. Using ultrasound as a non-invasive test for liver disease can help assess liver tissue stiffness within minutes.

Liver biopsies are costly and carry potential complications



up to
\$2,700

Non-invasive technologies, such as shear wave elastography, produce instant results and potentially reduce healthcare costs by avoiding possible complications from infections caused by interventional procedures².

Everything you need, nothing you don't

Small on the outside, yet big on the inside

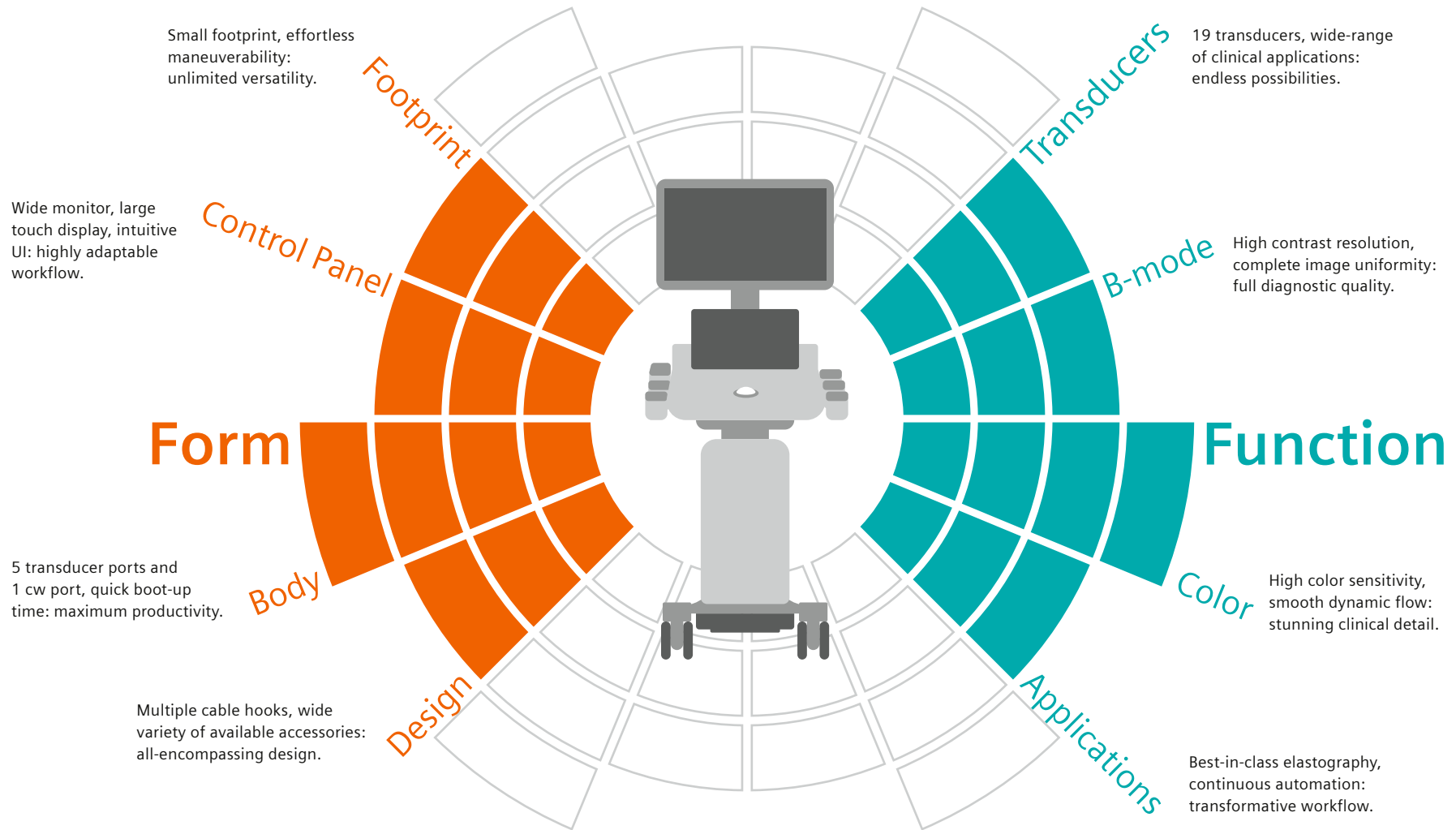
ACUSON Juniper is powered by a completely new platform, designed from the ground up to offer high-fidelity transmit and receive acoustic signals that greatly reduces noise and offers premium image quality and industry leading elasticity solutions.

Where form and function meet

Performance comes at no cost to the functional design of the system. ACUSON Juniper offers one of the smallest market footprints in its class, effortless maneuverability, 5 active transducer ports and a simple, intuitive and highly customizable control panel.



Where form meets function



Focus on what matters most

Move easily between exams, patients, and spaces while still benefiting from remarkable system performance with the ACUSON Juniper system. The 6 ports, including 5 active transducer ports and 1 CW port, support multiple clinical applications as you move about your day. Designed with intent, the

system adjusts easily to individual working preferences – pull the lightweight system from the front or back as you move between exams, tilt the monitor up or down as needed for your height, or rotate the control panel left or right depending on the patient bed location.



Control Panel

Support greater workflow personalization with a simple, intuitive control panel and tiltable, highly customizable 13.3-inch touch screen. Able to be optimized for space availability, convenience, and user preference, the system's 90° right and left rotation allows flexibility and improved transducer connector positioning.



The Footprint

ACUSON Juniper offers powerful capabilities in one of the industry's smallest ultrasound systems. Able to fit in virtually any hospital room, the system is up to 36% smaller and weighs an average of 27% less than other systems in its class.

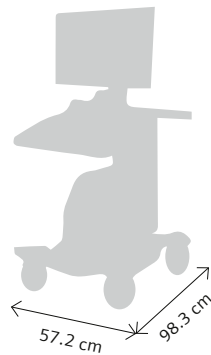
ACUSON Juniper



Vendor A
+14% larger



Vendor B
+31% larger



Vendor C
+36% larger



Up to **36% smaller** than other systems in the same class, the **ACUSON Juniper** fits into virtually any hospital room. Weighing **only 76 kg (168 pounds)**, making it one of the lightest and easiest to maneuver Ultrasound system in its class.



21.5-inch LED monitor highly adjustable transition for optimal ergonomic positioning toward, away and side-to-side.



13.3-inch high resolution tiltable touch panel with rapid response technology, allows for quick and accurate key selection.



90° right and left rotation allows the user the flexibility of choosing the transducer connectors position.



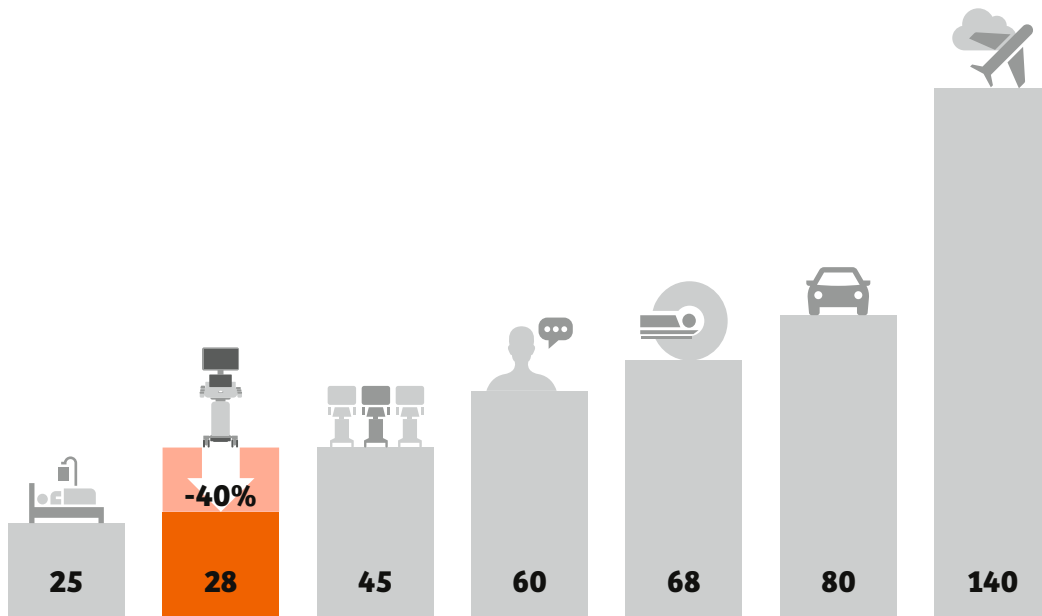
Front and back handle for effortless maneuverability.



Bi-directional locks enable moving the system easily from one location to another.

Focus on what matters most

Among the quietest ultrasound systems in its class on the market, the ACUSON Juniper allows a comfortable room environment and redefines adaptability, meeting staff preferences with ease so you can focus on what matters most – your patient.



The sound of silence. ACUSON Juniper is **40% quieter** than the average ultrasound system. Sound pressure in decibels (dB)



Design

The control panel supports a clean and sterile environment with its customized disposable skin. Several cable hooks are available to support better cable management and efficiency.



Body

With 5 active transducer ports and 1 pencil port, the ACUSON Juniper is always ready to scan with little to no setup time. This system is designed for a stress-free environment with a sound pressure of only 28 decibels.



Customized disposable skin keeps the control panel clean and sterile.



Purposeful cable management hooks – several hooks available for a clean, cable free environment.



Everything made with intent, including utilities storage basket, magnetic storage bin, and transducer holders.



Efficient workflow with 5 active transducer ports and 1 CW port.



ECG cable connector, auxiliary physio port, and DVD writer.

Image every patient

Routinely delivering high-quality care means scanning virtually every patient regardless of their size, weight, or condition. With its clinical versatility and industry-leading tissue elasticity imaging, the ACUSON Juniper enables you to expand your ultrasound clinical and service offerings across virtually all patient and case types.

The system's wide variety of clinical solutions and fast image acquisition

can improve diagnostic confidence across all departments, from radiology, interventional radiology, and urology to cardiovascular, orthopedic, and obstetrics/gynecological imaging.

The ACUSON Juniper has a comprehensive suite of 19 transducers, supporting a diverse range of Shared Services, Cardiac, and Women's Health clinical applications.



Transducers

Cover a wide range of clinical needs with 19 transducers that deliver the versatility to expand clinical offerings.



B-mode

High contrast resolution, complete image uniformity: full diagnostic quality.



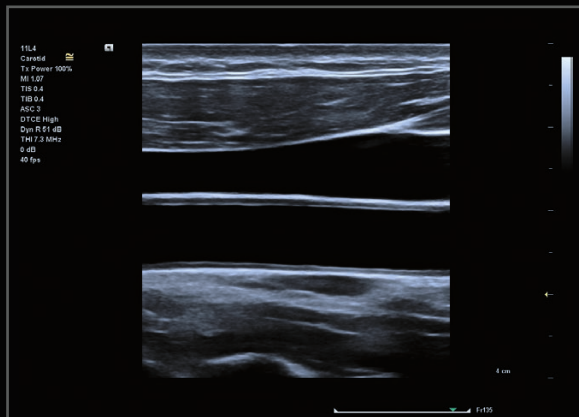
Complete homogeneous liver texture from the near to the far field with a well-balanced pixel pattern and sharp border delineation.



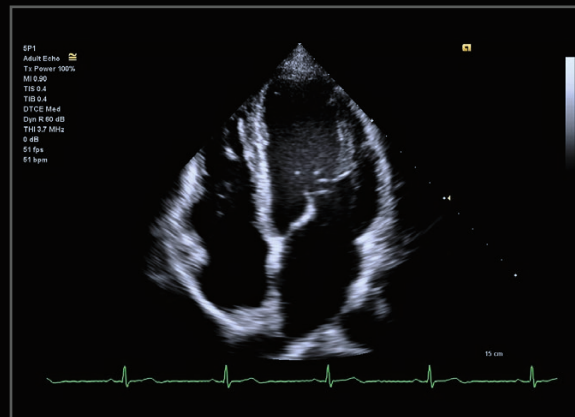
Improved tissue differentiation and border detection, as with this gallbladder mass, using Dynamic TCE tissue contrast enhancement technology.



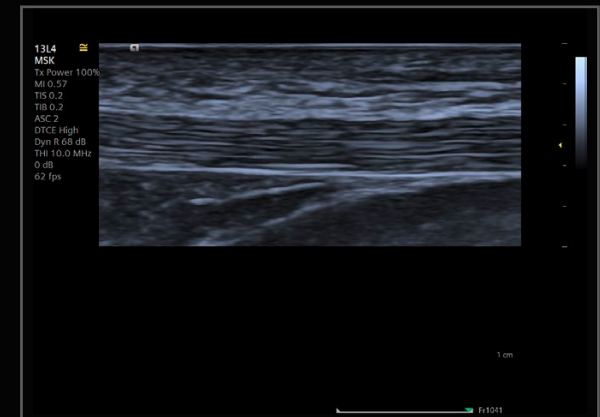
This image of a fetal profile shows excellent contrast resolution and visualization of subtle tissue differences using eSiImage Multiparametric Optimization, without having to adjust any of the gain controls.



A simple and intuitive control panel allows the users to easily adjust the imaging parameters, resulting in increased speed and work flow efficiency.



Four chamber view of the heart utilizing the 5P1 single crystal transducer.

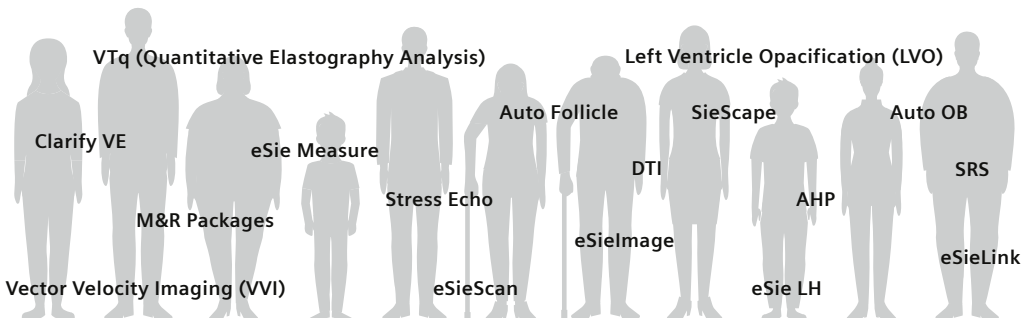


The fibrous connective tissue bands are clearly displayed in this image of the patellar tendon.

Image every patient

The ACUSON Juniper delivers consistency and repeatability for your clinical environment by guiding the user on what views are required and what else they need to do to get a complete study. Reduce motion

artifacts and noise while simultaneously enhancing color sensitivity with Dynamic Persistence and color Auto Flash Artifact Suppression technologies.



ACUSON Juniper Advanced applications for maximum productivity and confidence.



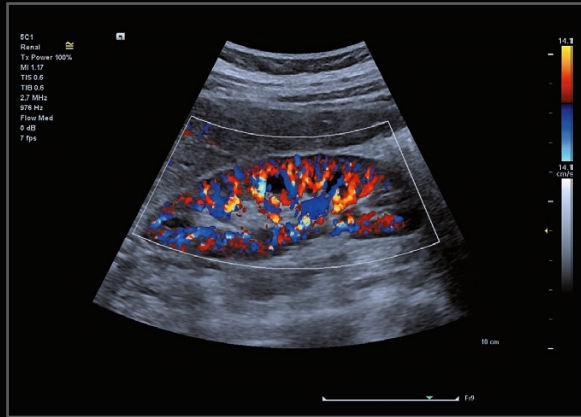
Color

Improve diagnostic confidence with exceptional color resolution and with improved physiological representation of color while reducing color flash artifact.

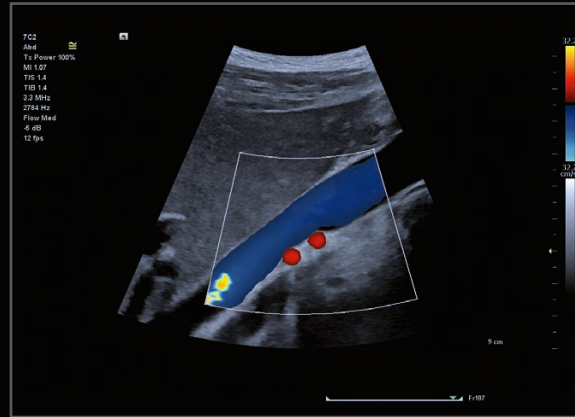


Applications

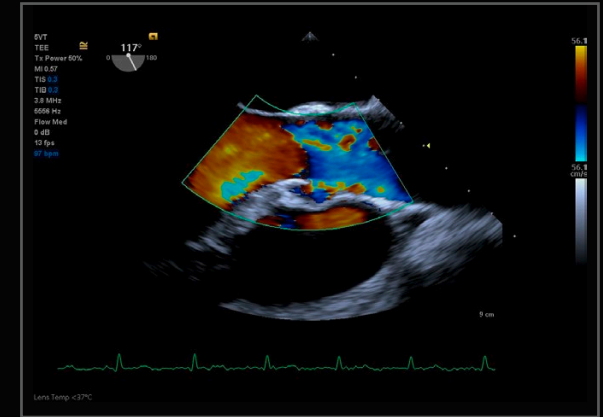
Offers the ability to measure tissue elasticity imaging with a click of a button using our best-in-class Virtual Touch quantification and eSie Touch elastography. The system helps to reduce operator variability, improves accuracy and gives greater consistency in reporting through several automated tools.



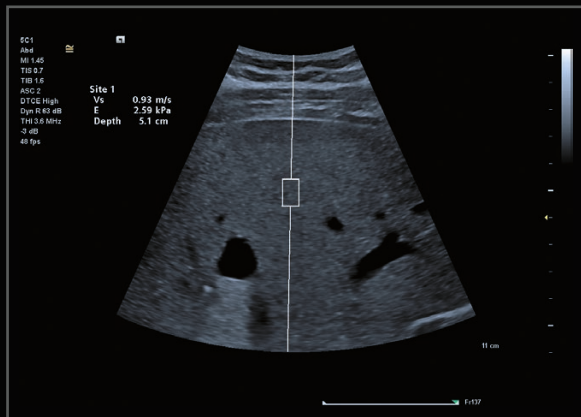
The perfusion of the renal cortex can be seen here using our color Doppler with Auto Flash Artifact Suppression technology.



Dynamic Persistence and Auto Flash Artifact Suppression technologies help reduce tissue motion and color Doppler artifact, shown in this image of the IVC and duplicated right renal artery.



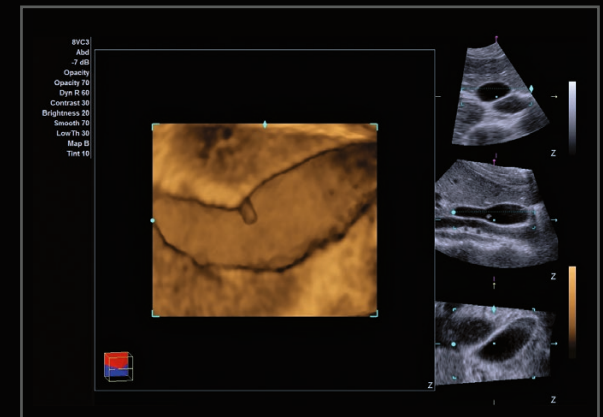
A transesophageal image of the LVOT and aortic valve are visualized with color flow Doppler using the 5VT transducer.



Reproducible, reliable and detailed tissue stiffness information can be quickly and easily obtained using our one touch Virtual Touch quantification technology.



syngo VVI is used to assess myocardial motion and mechanics and quantifies Global Longitudinal Strain (GLS), Global Circumferential Strain (GCS), and Global Radial Strain (GRS).



3-Scape 3D shows a detailed representation of the gallbladder pathology seen here.

Where form meets function

Functional Performance

- Shear wave elastography imaging
- Comprehensive measurements package
- Suite of 19 transducers to cover all clinical applications
- New front-end, beamformer and back-end engines for improved contrast resolution, plunkability, sensitivity and specificity
- syngo VVI (Velocity Vector Imaging) cardiac strain analysis package

13.3" touch display

Smart UI for quicker scan settings and protocols

Intuitive control panel

Customizable height, angle and keys

Quiet, stress-free environment

Bedroom-like sound level, 40% quieter than average

Every detail designed to maximize productivity

Multiple storage bins available as well as space for easy installation of peripherals



21.5" LED monitor

Highly adjustable for maximum operator adaptability

Lightweight maneuverability

One of the easiest systems to maneuver, weighing only 76 kilos (168 pounds), and with both rear and front handles

Purposeful cable management hooks

Several hooks available for a clean, cable free environment

Multiple transducer ports

Efficient workflow with 5 active transducer ports, 1 pencil cardiac port and 2 physio ports

Services

Rising cost pressure in healthcare drives need for continuous optimization across the equipment lifecycle

Today, the service experience goes above and beyond pure maintenance. Service can make the difference to your daily operations and help you evolve. This is why we keep innovating our portfolio and team up with you for enhanced efficiency and optimized clinical outcomes. As our world becomes more connected each day, we put special focus on adding new services to our digital offerings so we can fulfill your requirements better and faster.

With our services, we are by your side whenever you need us. Always on. Always in touch.

Service Plans

Benefit from maximized equipment performance and improved staff expertise while keeping unplanned service costs to a minimum.

Connect Platforms and Smart Enablers

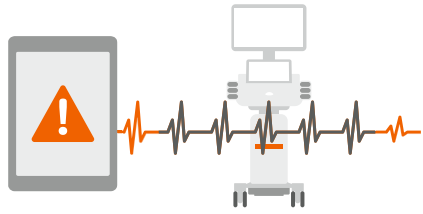
Your gateway to experience our wide range of customer services. Get connected to our digital platforms and experience our great variety of services to enhance your daily operations.

Smart Remote Services (SRS), powered by eSieLink, is a rapid, secure connection to technical and clinical support.

PEPconnect is a smart connection to knowledge – designed to increase staff competency, efficiency and productivity.

teamply Fleet is a fast connection to insights. It is a teamply digital health platform solution that enables you to streamline the management of your fleet from Siemens Healthineers and to optimize your asset performance holistically, 24/7.





UpTime Services

UpTime Services are designed to provide equipment availability and assure long-term quality and safety to allow you to manage (un-)planned downtimes so that your equipment performs optimally.

Planned Maintenance for reliable equipment operation and diagnostic quality in line with regulatory guidelines.

Corrective Maintenance for optimized uptime through fast error correction by certified technical experts.

Application Support for in-house clinical support.



UpSpeed Services

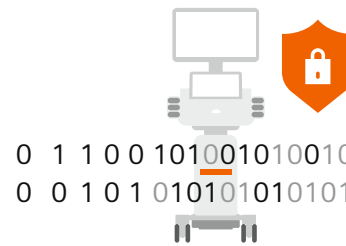
UpSpeed Services give you access to experts anytime to answer technical and clinical application questions remotely and proactively monitor your equipment – for fast and smooth-running operations.

eSieLink – Real-time interaction with clinical and technical experts
Experts will be with you whenever you need for resolving system issues, image-quality troubleshooting, basic improvement to existing scan protocols and restoration of presets, and step-by-step guidance through clinical applications during real-life, daily operations.



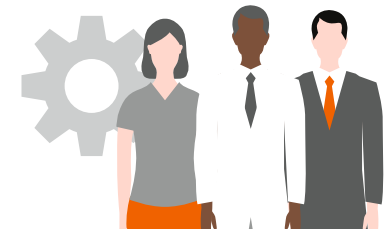
UpSkill Education & Training

for workforce know-how and efficiency through knowledge and competency development.



UpLift Asset Lifetime

for state-of-the-art equipment and the latest clinical applications.



UpTeam Workforce Management

for managing and monitoring staff education.

Feature overview

ACUSON Juniper Ultrasound System

The ACUSON Juniper provides embedded time-tested and leading-edge imaging technologies encapsulated by an elegant, yet simple and intuitive design. The ACUSON Juniper supports 19 transducers and has 5 transducer ports.

With a capacitive touch screen and traditional control panel, the ACUSON Juniper is engineered to grow and adapt with dynamic user requirements and departmental demands as they evolve.

ACUSON Juniper Ultrasound System, Select Edition

Note: This product option supports limited transducers, software features and options compared to the ACUSON Juniper. The ACUSON Juniper Select Edition has 4 transducer ports.

The ACUSON Juniper Select Edition is not upgradable to include advanced features and transducers.

Probes	ACUSON Juniper	ACUSON Juniper Select Edition
5C1, 8VC3, 10MC3, 12L3, 11L4, 5P1, CW2, CW5	○	○
7C2, 11M3, 9VE3, 9MC3, 16L4, 13L4, 18H5, 5VT, 8V4, 10V4, CW8 ¹	○	N/A

¹ CW8 transducer is not available for sale in the U.S.A.

● Standard ○ Optional

Options	ACUSON Juniper	ACUSON Juniper Select Edition
Windows 10 Operating System	●	●
Auto Flash Color Artifact Suppression	●	●
Advanced SieClear Spatial Compounding	●	●
Clarify Vascular Enhancement (VE) Technology	●	●
eSieImage Multiparametric Optimization	●	●
DICOM 3.0 Connectivity, DICOM Modality Worklist, DICOM MPPS – Modality Performed Procedure Step, DICOM Structured Reporting	●	●
Ultrasound System Security – Virus Protection	●	●
Enhanced Needle Visualization	○	N/A
eSieScan Workflow Protocols	○	○
eSie Touch Elasticity Imaging	○	N/A
syngo Arterial Health Package (AHP)	○	○
Virtual Touch Quantification	○	N/A
syngo Auto OB Measurements	○	○
syngo Auto Follicle Measurements	○	○
4D Imaging	○	○
Cardiovascular	○	○
DTI Doppler Tissue Imaging (for Cardiac)	●	●
Left Ventricular Opacification Contrast (LVO)	●	●
Physio Module	○	○
Stress Echo	○	N/A
eSie Measure Workflow Acceleration Package	○	○
eSie Left Heart Measurement Package	○	N/A
syngo Velocity Vector Imaging	○	N/A
QuikStart Standby Mode	○	N/A

The products/features mentioned in this document may not be commercially available in all countries. Due to regulatory reasons their future availability cannot be guaranteed. Please contact your local Siemens organization for further details.

Standalone clinical images may have been cropped to better visualize pathology.

ACUSON Juniper, Clarify VE, eSieImage, eSie Left Heart (LH), eSieLink, eSie Measure, eSieScan, eSie Touch, LVO, 3-Scape, Virtual Touch quantification (VTq), and VVI are trademarks of Siemens Medical Solutions USA, Inc.

syngo is a registered trademark owned by Siemens Healthcare GmbH.

At Siemens Healthineers, our mission is to enable healthcare providers to increase value by empowering them on their journey towards expanding precision medicine, transforming care delivery, and improving patient experience, all enabled by digitalizing healthcare.

An estimated five million patients worldwide everyday benefit from our innovative technologies and services in the areas of diagnostic and therapeutic imaging, laboratory diagnostics and molecular medicine as well as digital health and enterprise services.

We're a leading medical technology company with over 120 years of experience and 18,500 patents globally. With over 50,000 employees in more than 70 countries, we'll continue to innovate and shape the future of healthcare.

Endnotes

¹ World Health Organization (WHO), 2010

² Franciscus, Alan, 2014. Hepatitis C Support Project

³ Prerequisites include: wireless connection to clinical network, meeting recommended minimum hardware requirements, and adherence to local privacy and security regulations.

Siemens Healthineers Headquarters

Siemens Healthcare GmbH
Henkestr. 127
91052 Erlangen, Germany
Phone: +49 9131 84-0
siemens-healthineers.com

Legal Manufacturer

Siemens Medical Solutions USA, Inc.
Ultrasound
22010 S.E. 51st Street
Issaquah, WA 98029, USA
Phone: 1-888-826-9702
siemens-healthineers.com/ultrasound